

PENNINGTON SURVEY, A-323

Open Space Reserve
Reserve of called 200 Acres
C.R. 50, by 51, D.R. 111, 112

John C. Carey
Called 11,067 Acres
C.R. 100, by 676, D.R. 111, 112

RESERVE OF CALLED 200 ACRES
C.R. 50, BY 51, D.R. 111, 112

H. & T.C.R.R. Co

A Subdivision of
A Reserve

John C. Carey
Called 10,000 Acres
C.R. 100, by 419, D.R. 111, 112

H. & T.C.R.R. Co

George L. Caballero, et al
Called 500 Acres
C.R. 100, by 458, D.R. 111, 112

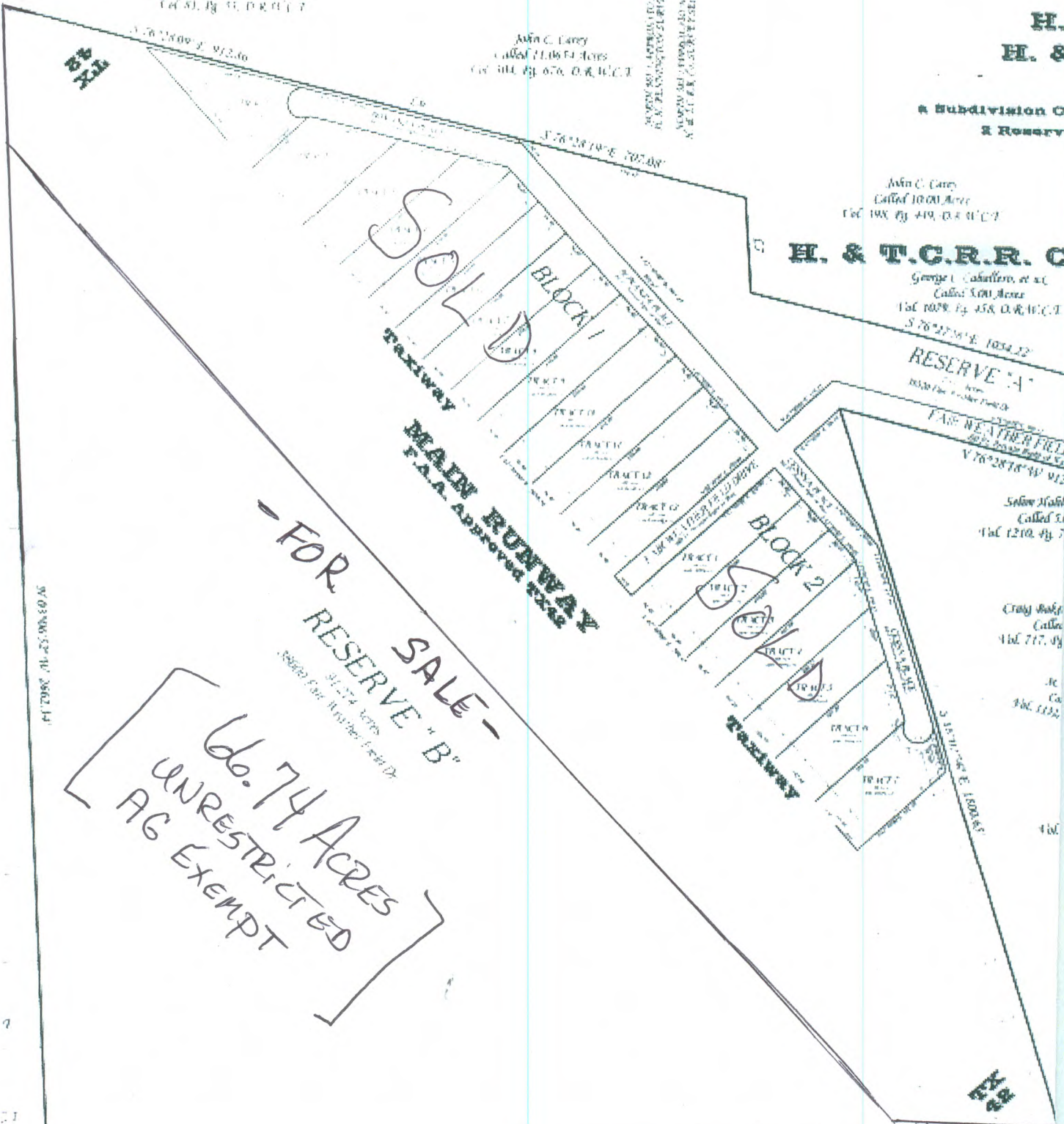
RESERVE "A"

FAIR WEATHER FIELD
Called 200 Acres
C.R. 100, by 458, D.R. 111, 112

Selma Stahl
Called 50
C.R. 1210, by 7

Craig Wolf
Called
C.R. 717, by 9

Call
C.R. 1132



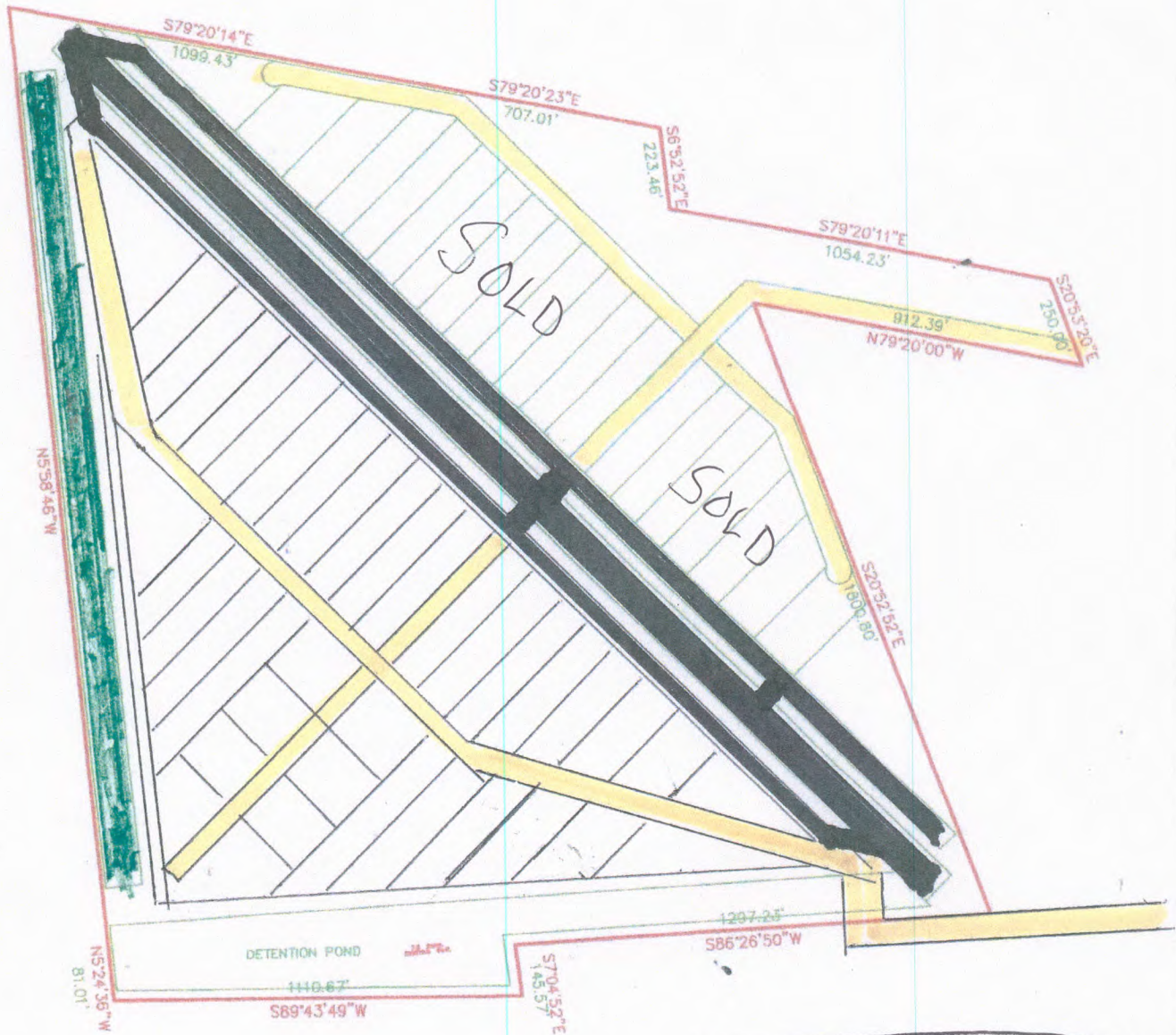
FOR RESERVE SALE -
RESERVE "B"

66.74 ACRES
UNRESTRICTED
AG EXEMPT

Julie Family Limited Partnership
Called 250,585 Acres
C.R. 906, by 692, D.R. 111, 112

Fair Weather Field TX42 Rendering

RENDERING FOR HIGHEST & BEST USE.



-  Turf Runway
-  Roads
-  Runway and Taxiways

39 1 Acre Lots Platted would be Highest & Best Use