

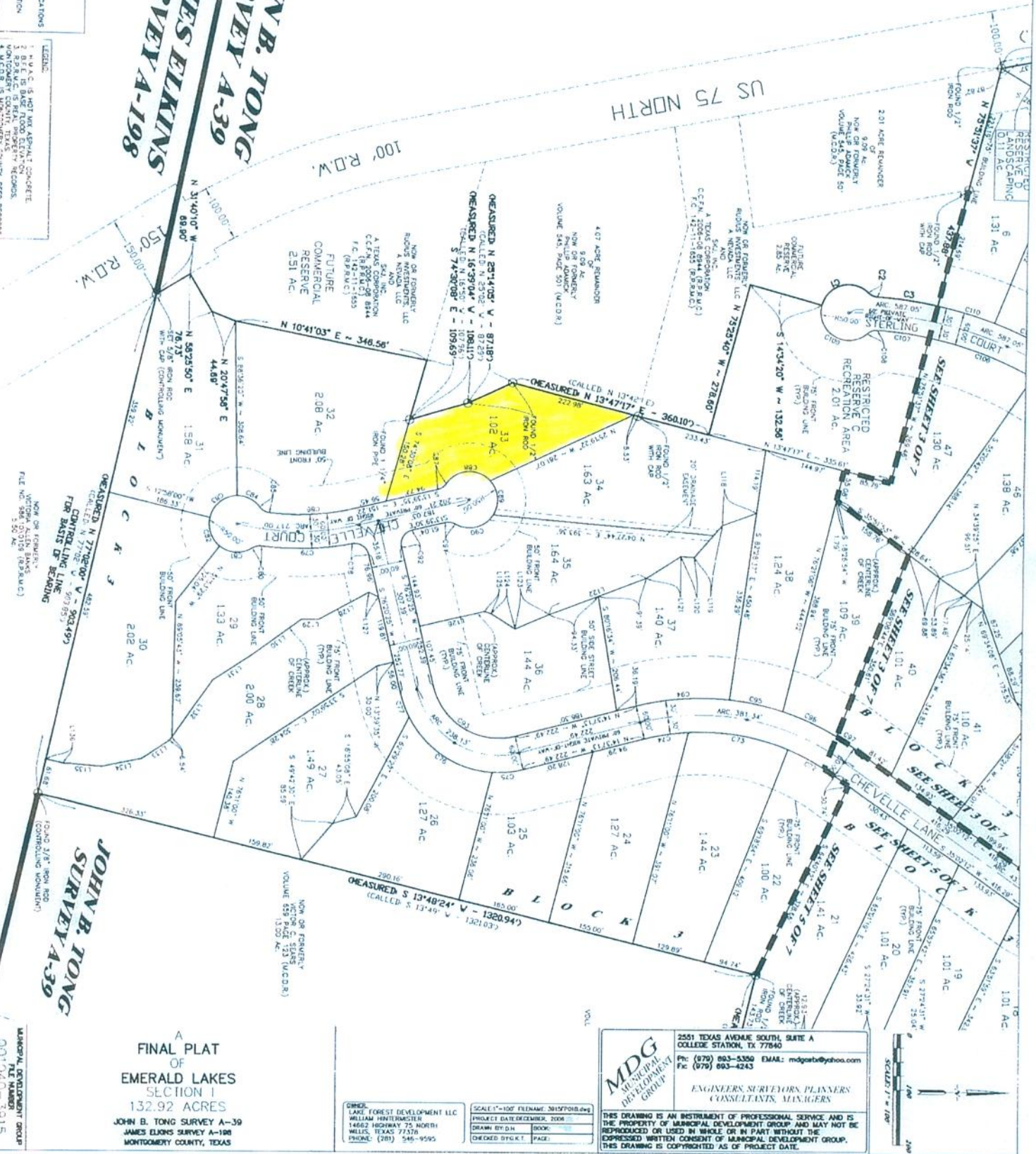
NOTE

1. FOR LINES AND CURVE DETAILS SEE SHEET 7 OF 7.
2. FOR GENERAL NOTES AND CERTIFICATIONS SEE SHEET 7 OF 7.
3. SEE NOTES AND EQUATIONS DESCRIBING ISSUED WITH THIS PLAN FOR MORE INFORMATION.

LEGEND

1. H.A.C. IS NOT AN ASPHALT CONCRETE
2. B.E. IS BASE ELEVATION
3. HORIZONTAL CURVE PROPERTY RECORDS
4. M.C.R. IS MONTGOMERY COUNTY DEED RECORDS

JOHN B. TONG SURVEY A-39
JAMES EIKINS SURVEY A-198



A
 FINAL PLAT
 OF
EMERALD LAKES
 SECTION 1
 132.92 ACRES
 JOHN B. TONG SURVEY A-39
 JAMES EIKINS SURVEY A-198
 MONTGOMERY COUNTY, TEXAS

| | |
|--|--|
| OWNER: EMERALD LAKES DEVELOPMENT LLC WILLIAM HINTERMISTER 14622 HIGHWAY 75 NORTH WELLS, TEXAS 77376 PHONE: (281) 545-9595 | SCALE: 1"=100' FILENAME: 200727010.dwg PROJECT DATE: DECEMBER, 2006 DRAWN BY: D.H. BOOK: _____ CHECKED BY: K.T. PAGE: _____ |
|--|--|

MDG
 MUNICIPAL DEVELOPMENT GROUP

2551 TEXAS AVENUE SOUTH, SUITE A
 COLLEGE STATION, TX 77840
 Ph: (979) 693-5360 EMAIL: mdgstaff@yahoo.com
 Fx: (979) 693-4243

ENGINEERS, SURVEYORS, PLANNERS
 CONSULTANTS, MANAGERS

THIS DRAWING IS AN INSTRUMENT OF PROFESSIONAL SERVICE AND IS THE PROPERTY OF MUNICIPAL DEVELOPMENT GROUP AND MAY NOT BE REPRODUCED OR USED IN WHOLE OR IN PART WITHOUT THE EXPRESSED WRITTEN CONSENT OF MUNICIPAL DEVELOPMENT GROUP. THIS DRAWING IS COPYRIGHTED AS OF PROJECT DATE.

MUNICIPAL DEVELOPMENT GROUP
 FILE NUMBER
 001040-3915
 SHEET 4 OF 7

FILE # 2007-036606

CAB. Z

SHEET 733