

South line KENNETH HYMAN A-249 SURVEY

25' strip of land is hereby dedicated for drainage purposes



15' strip of land is hereby dedicated for widening Gladstell Road

A C R E A G E #38511

North line RANSON HOUSE A-245 SURVEY

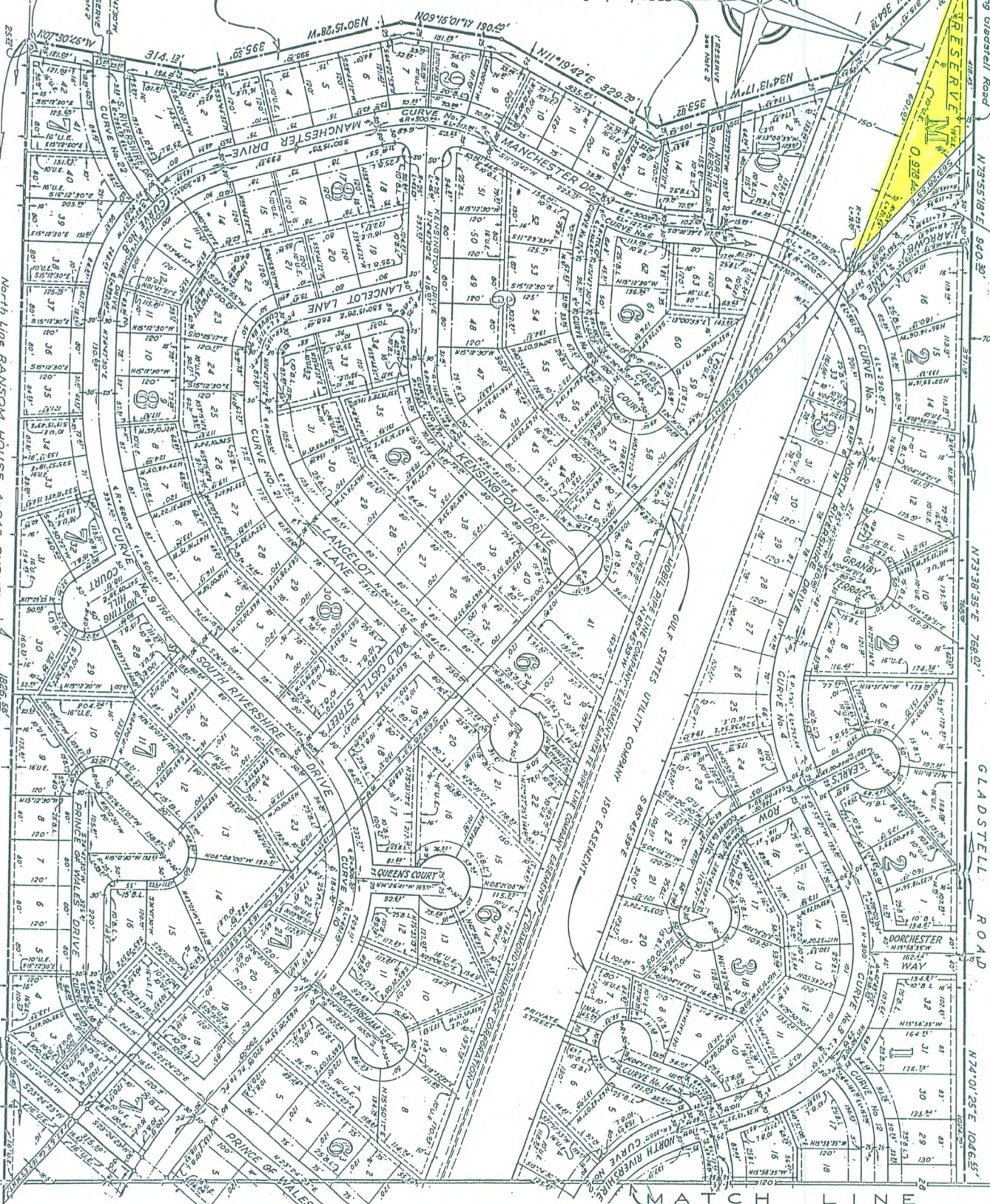
W. 10' P. 3'

Boy Scouts of America Sam Houston Area Council #411, 250

A0551:004 CAM P

S T R A K E

4206.81' RIVERSHIRE SHEET 4 OF 5



GLADSTELL ROAD

N74°01'25"E 104.65'

MATCH LINE